



DracoDrum

Retro Bottom Drain User Guide

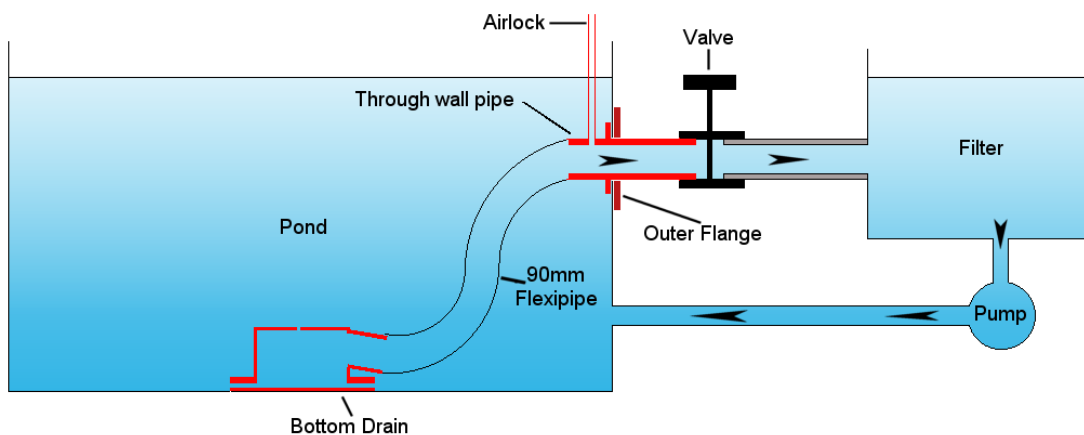
Congratulations on your purchase of the DracoDrum Retro Bottom Drain. This converts filtration systems into a true gravity fed system rather than pump fed.

The filter system must be lowered so that the running water level is level with that of the pond surface to allow the system to work as a gravity fed system should.

The bottom drain will arrive with the following parts in the box:

Everything in red including the valve (3") and 90mm flexi pipe (3m standard)

True gravity retro fit bottom drain kit - "DracoDrum"



Before Starting

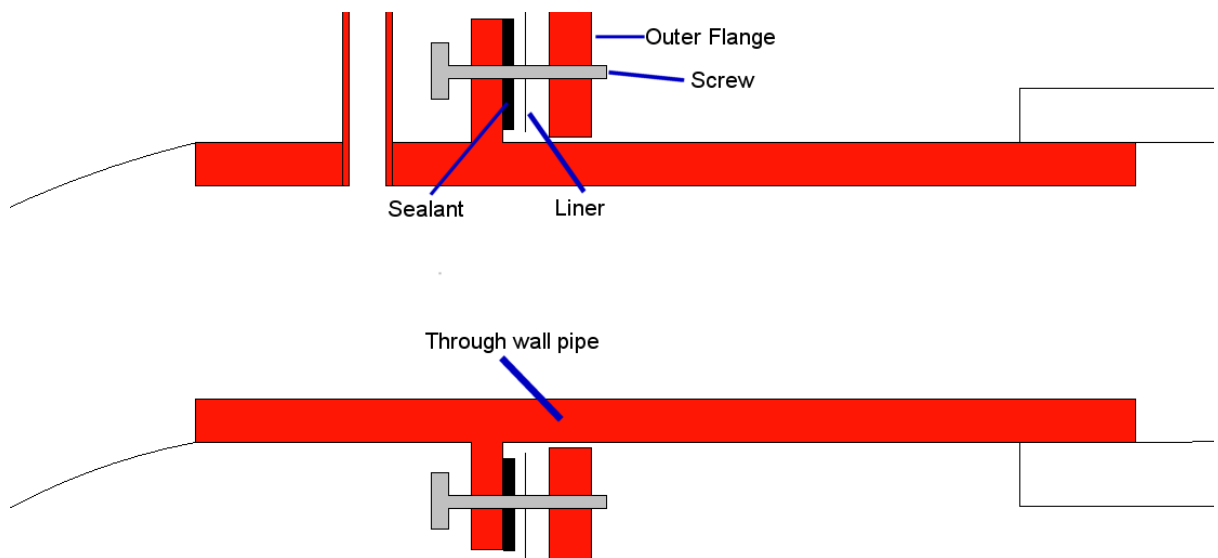
Lower the level of the pond temporarily to allow you to fit the kit

Attaching the Wall Plate

If you have a liner

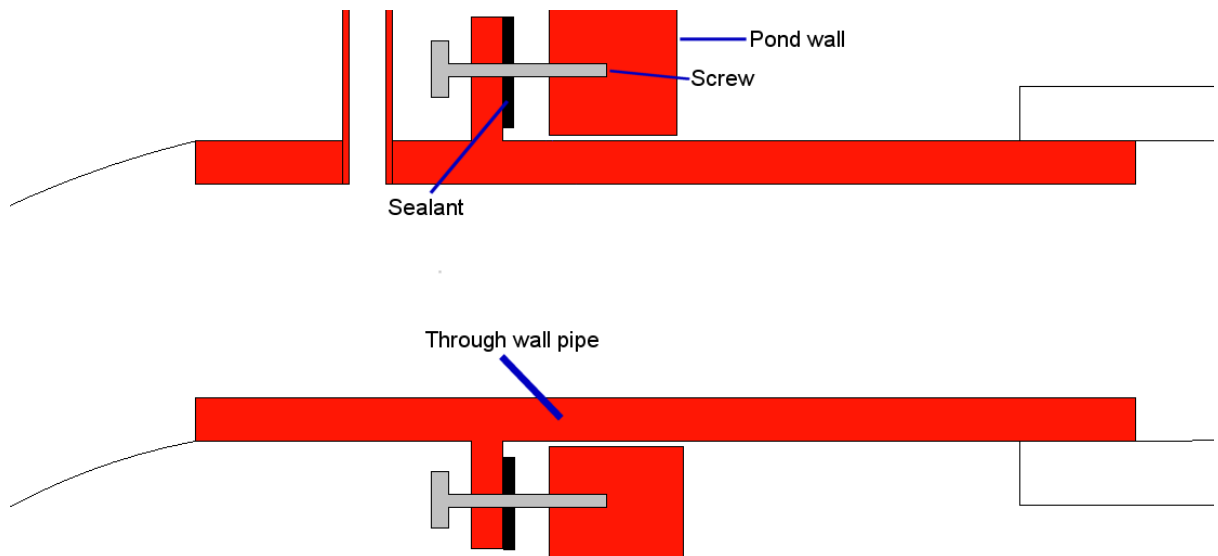
Mount the outer flange plate behind the liner but inside the pond structural wall, with the top of the plate at around water level. Bore through pond wall structure using a 90mm core drill or similar in line with the hole in the outer flange. Cut liner out inside the 90mm aperture in the centre of the outer flange plate.

The through wall pipe will then fit through this hole, with the long end going through the pond wall and the airlock pipe on the "pond side". Put a liberal amount of sealant on the welded flange, liner side, on the through wall pipe and slide the pipe in through the hole in the liner, outer flange and pond wall. Align the screw holes and use the 6 screws to join together the outer flange and through wall pipe flange, clamping the liner in place.



If you have only a solid wall/ fibreglassed

The outer flange plate is not needed in this case. Approximately 2 to 4 inches below normal water level, bore a 90mm hole through the pond wall and/or fibreglass. Apply a liberal amount of sealant to the inside face of the flange that is welded to the pipe. Slide this pipe through the bored hole until the flange fits snugly against the pond wall. If necessary, drill into the pond wall for each of the 6 clamp screws and fit accordingly.



Attaching the Gate Valve

Slide the gate valve over the end of the through wall pipe and either glue or silica it into place.

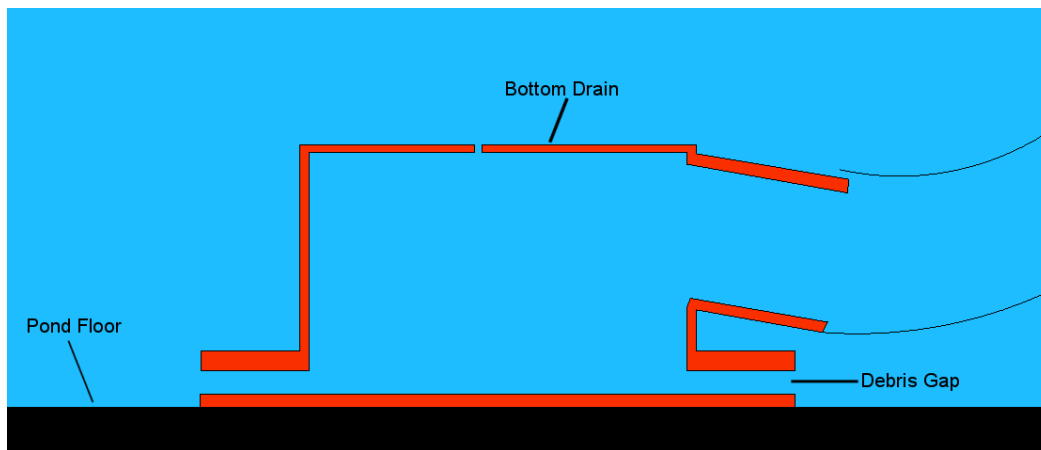
Make sure you keep the gate valve closed until you are ready to open the system.

Flexi Pipe and Actual Bottom Drain Attachment

Attach the 90mm flexi pipe to the round wall plate, you will find a little grease, e.g. Vaseline, on the pipe will aid with this step.

Next attach the other end of the flexi pipe to the bottom drain. Again a little grease, E.g. vaseline will help here

Place the bottom drain in the pond with the large plate facing downwards, it is heavy enough that it will sink.



NB You can gently move it around to get it into the correct position for your pond but please remember that the fish are also likely to move it around so when doing a bottom drain flush you may want to make sure that it is in the optimum position, to do so, for your pond.

Attach to your filter

Once the running water level for your filter is at your pond surface level, connect the valve to your filter using 3" (90mm) pipe or bigger. Your pump will now be plumbed into the outlet of your filter (dry standing) and the output of that piped back to the pond, as you choose, whether it be over-the-wall, through-the-wall or return via a shower or waterfall.

We recommend that the pump is fitted with isolation valves, both for in and out, in case of any issues or cleaning regimes in the future.

Slowly open the gate valve to check that you have no leaks and bring the pond water level back up to where it should be.

Turn on pump and you will have a fully functional gravity fed filter system.

DracoDrum Guarantee

This product comes with a 1 year warranty, which is valid from date of purchase. Proof of purchase will be required. Any unauthorised repairs, modifications or alterations to this unit will invalidate the warranty. DracoDrum Ltd accepts no responsibility or liability due to accident, improper installation or misuse. Liability is limited to replacement of the defective parts. This guarantee is not transferable. It does not affect your statutory rights.

DracoDrum Ltd and its dealers shall not be held liable for any consequential loss caused by or arising from the use of any DracoDrum products including loss of fish, plants or any other livestock as a result of any failure or defect of this product. Any dispute arising from the provisions of the warranty will be dealt with under the laws of England and Wales.